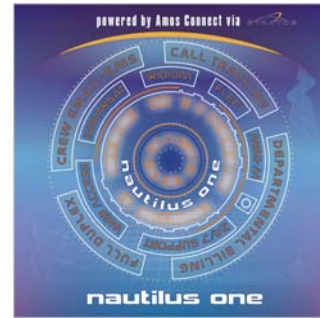


Installation

- 1) Run the Nautilus One - AmosConnect Installation from the media e.g. CD-ROM, DVD, USB key. The program stores the files in a temporary folder whilst installing. Accept the defaults offered, as they will be removed at the end of the installation.
- 2) In the screen "Welcome to the install shield wizard for Nautilus One - AmosConnect" press **Next**.
- 3) In the screen "License Agreement" select (after reading the license agreement) "*I accept the terms of the license*" and press **Next**.
- 4) At "set-up type", select Complete and press **Next**.
- 5) The software is now ready to install. Press **Install** to install the software.
- 6) After the installation of the software press **Finish**.



Note: It is possible that your computer requires a reboot. If asked to reboot, please do so before continuing with the configuration of the software. After the reboot, press the Nautilus One - AmosConnect icon and the configuration of the software will start.

Configuration

- 1) At the first screen, "Nautilus One - AmosConnect *Configurator*", select "create a new postoffice" press **Next**.
- 2) Select the option "I don't have a license key". Press **Next**.
- 3) Fill in all the details , press **Next** when completed.

The image is a screenshot of the "AmosConnect Configuration Wizard" dialog box. The title bar reads "AmosConnect Configuration Wizard". The main area contains the following fields and instructions:

- "Please complete the following details. Items marked with an asterisk * MUST be filled in, the others are optional"
- "Your position:" followed by a text box with an asterisk * and the example "eg Master"
- "Ship name:" followed by a text box with an asterisk *
- "Your Company's name:" followed by a text box
- "Ship Inmarsat terminal ID:" followed by a text box and the example "eg begins with '3' for Inmarsat B, '7' for mini-M"
- "Shore based email address:" followed by a text box and the instruction "For confirmation of registration details"
- "Ship IMO number (7 digits):" followed by a text box
- "Message store details" section with "Database directory:" followed by a text box containing "C:\Program Files\Xantix\AmosConnect\db" with an asterisk * and a "Browse..." button.

At the bottom of the dialog box are three buttons: "< Back", "Next >", and "Cancel".

Note: The fields marked with * are necessary to fill in. If these fields are left blank, the installation cannot be completed!

- 4) Choose the desired email address. It is possible that not all the addresses listed can be selected but that some of them are grayed out. If you have chosen your email address press **Next** to continue.

Based on the information you have supplied, you can choose an email address from the options below:

- master.testvessel.@amosconnect.com
- master.testvessel@amosconnect.com
- master.testvessel@,amosconnect.com
- master@testvessel.,amosconnect.com
- master@testvessel.amosconnect.com
- @amosconnect.com

Note that some choices might be unavailable if you had illegal characters, or something else was missing in the information you gave on the previous page.

If any of these details are incorrect, please click on "Back" to amend them.

Note: During registration we will check that the email address you have requested is still available. If not, we will add an additional digit to your ship name for example "ship2".

To reduce to likelihood of this, please use both ship and company name.

< Back Next > Cancel



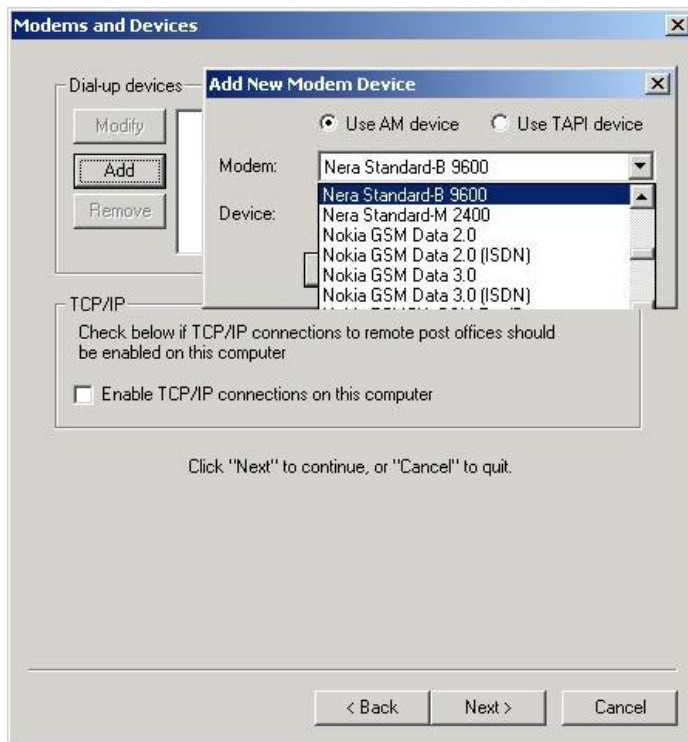
Note: If the chosen email address already exists, an additional digit will be added to your email address after registration. This will require no user action.

- 5) Press **Next** to create the database. This may take a few seconds. When the system has finished press **Finish**.



6) The screen “*Modems and devices*” allows you to select which modem(s)/terminal(s) you will use to connect to the Nautilus One - AmosConnect server. If you use BGAN, MPDS or any other TCP connection go to option B.

- a) Press **Add** and select your modem from the list. Try AM devices first and if your modem type is not listed, try TAPI. Note TAPI devices are installed through Windows Control Panel – if your modem or terminal does not appear in this list, first install it in Windows Control Panel and try again.
- b) If you use BGAN, MPDS or any other TCP connection check the enable tcp/ip connections on this computer box and press **Next**.



NOTE: for additional instructions on use of Windows XP SP2 together with TCP/IP connection method (BGAN, RBGAN and Fleet) please see annex A.

The screen entitled “*Congratulations*” is the final step. Press **FINISH** and Nautilus One - AmosConnect is ready for use. To start Nautilus One - AmosConnect, press start then Programs -> Xantic-> Nautilus One - AmosConnect. You will see the shortcut for Nautilus One - AmosConnect.

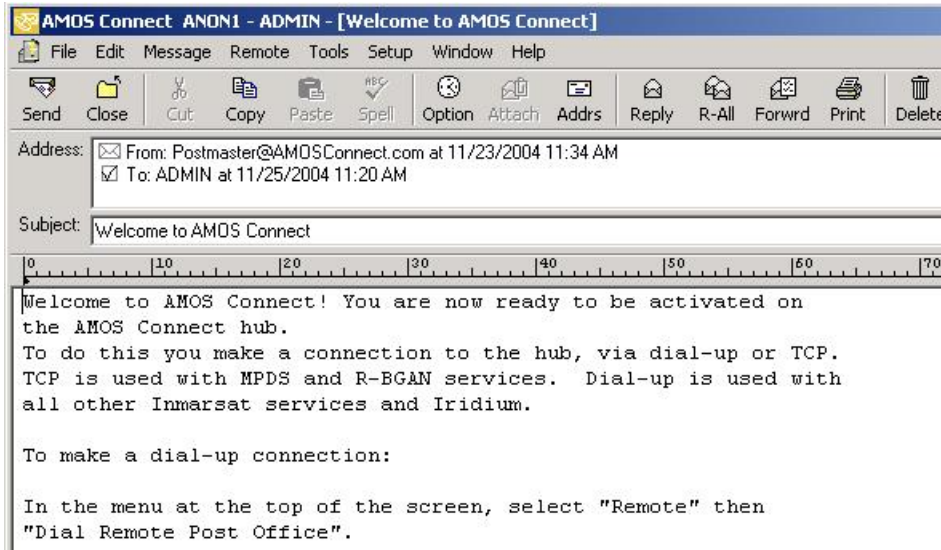


Registration of the Nautilus One - AmosConnect software

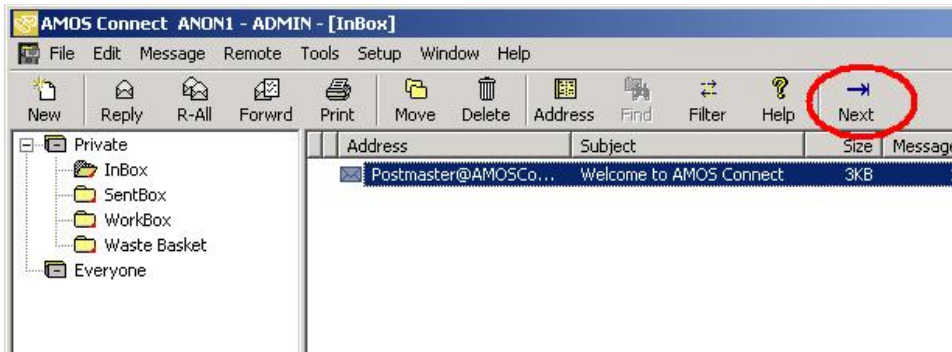


Once the installation and configuration is completed, the final step is the registration of the Nautilus One - AmosConnect Basic software. This procedure is required to use the Email system if this procedure is not completed the software can't be used.

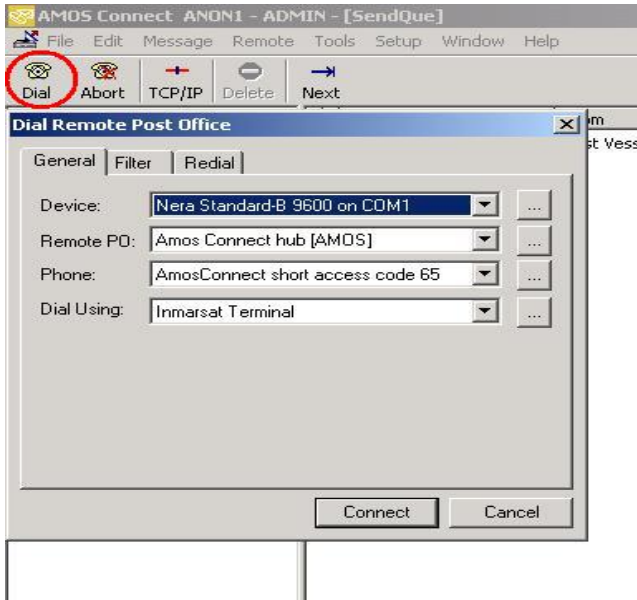
- 1) In the Inbox there will be an email from **postmaster@nautilusone.net** with a subject "Welcome to Nautilus One". Open the email by double click on it and you will see the following text:



- 2) To complete the registration procedure, the Nautilus One - AmosConnect Basic software needs to connect to the Nautilus One - AmosConnect server. To do this close the open email message by pressing **Close** then press **Next**.



- 3) Then press **Dial** and the following screen is displayed. If you use RBGAN or MPDS, you can now proceed to step 5.



Device: Your Terminal or modem should be listed here. If this is not the case, select it from the drop down menu.

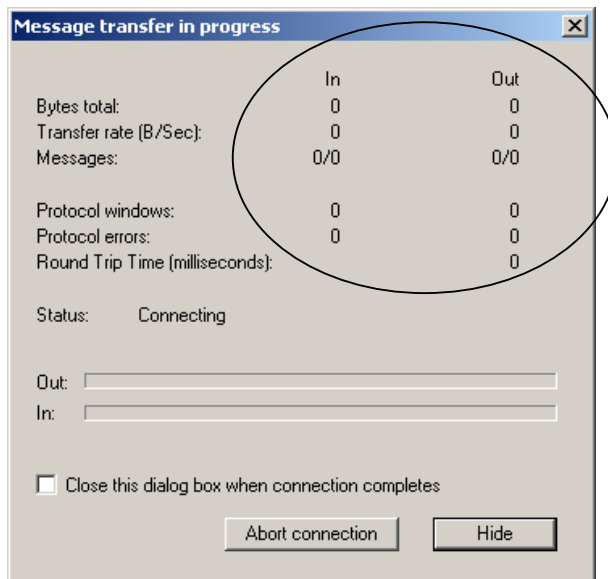
Remote PO: This will always be Nautilus One - AmosConnect **hub [AMOS]**

Phone: This will always be Nautilus One - AmosConnect **short access code 65**

Dial Using: This should be **Inmarsat Terminal**, however if you are using Iridium you should select **Iridium Phone** from the drop down menu.

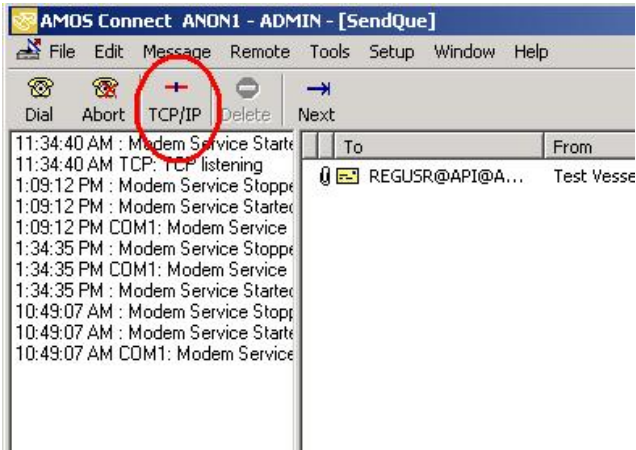
- 4) If all settings are correct press **Connect**. After about 20-30 seconds, numbers will appear in the area marked with the circle. This shows that data has been sent and received correctly.

Note: This function is not available for MPDS and RBGAN. For Fleet and GAN use the ISDN channel for registration and for RBGAN, prior activation is required using any of the supported terminals.

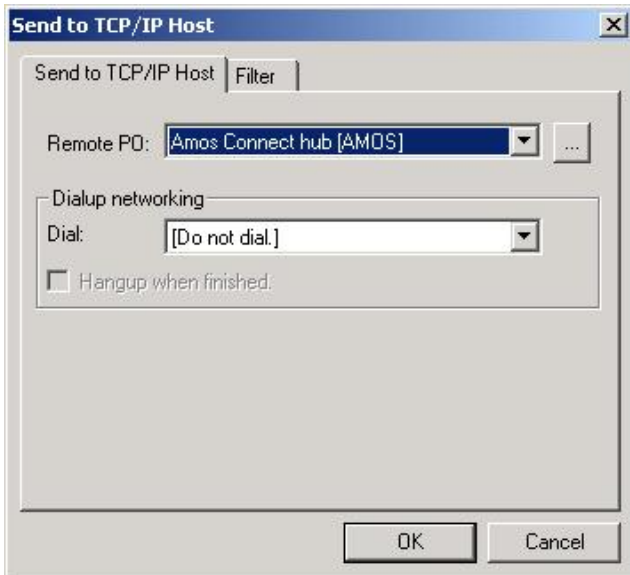


- 5) If you don't have MPDS or RBGAN you can now proceed to step 6.

Nautilus One - AmosConnect Basic works easily with RBGAN or MPDS. To connect via RBGAN or MPDS the **TCP/IP** option in the **Nautilus One - AmosConnect** software needs to be selected.



For RBGAN leave all the settings as they are and press **OK**

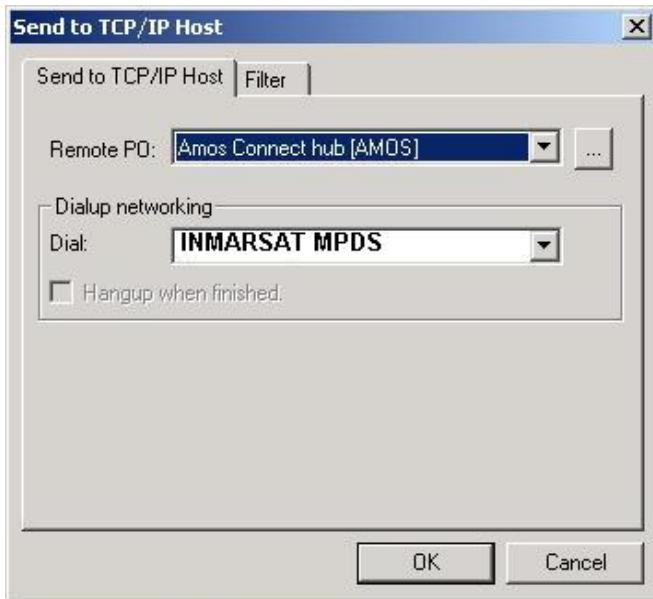


NOTE: RBGAN should have an active internet connection before connecting to Nautilus One – AmosConnect.

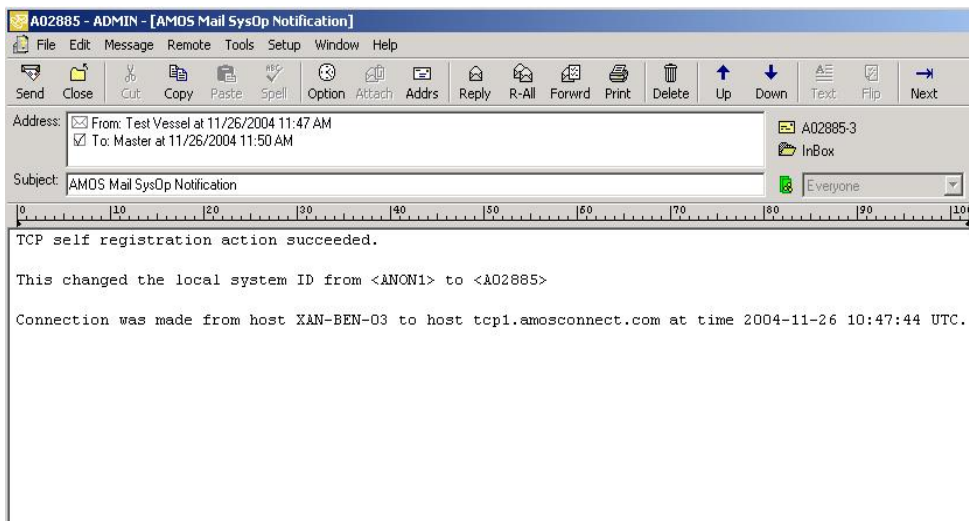
For MPDS you need to do a one-time set-up of the MPDS device this is documented and can be found on the media and is called **Nautilus One - AmosConnect _Fleet_GAN.pdf**
If MPDS is set-up select TCP/IP and from the "Dialup networking" select the installed MPDS connection and press **OK**. All email will be send and received when connected.

NOTE: for additional instructions on the use of Windows XP SP2 together with TCP/IP connection method (BGAN, RBGAN and Fleet), please see annex A.





- 6) After you have made the first successful connection, you will receive a message like the one below in you inbox.

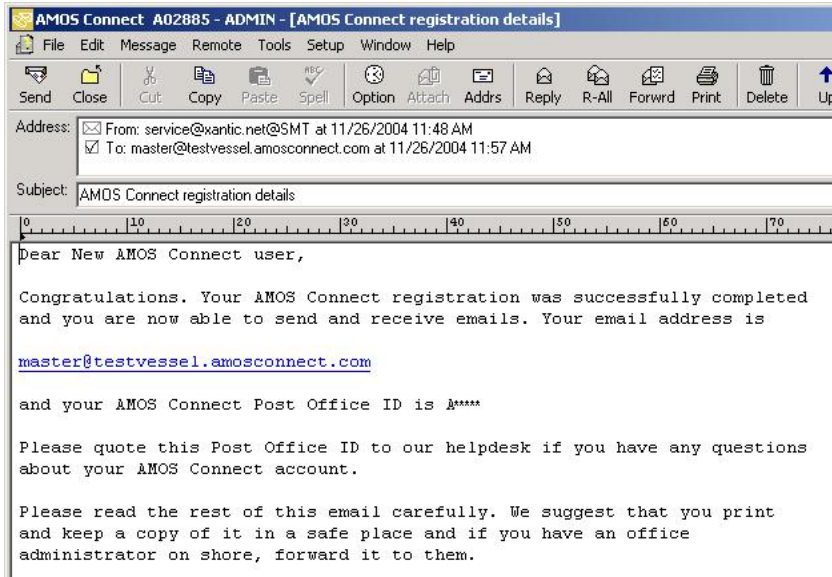


This message confirms that your account has been created on the Nautilus One - AmosConnect server. We will then check if your requested email address is available. This will take about 5 minutes.



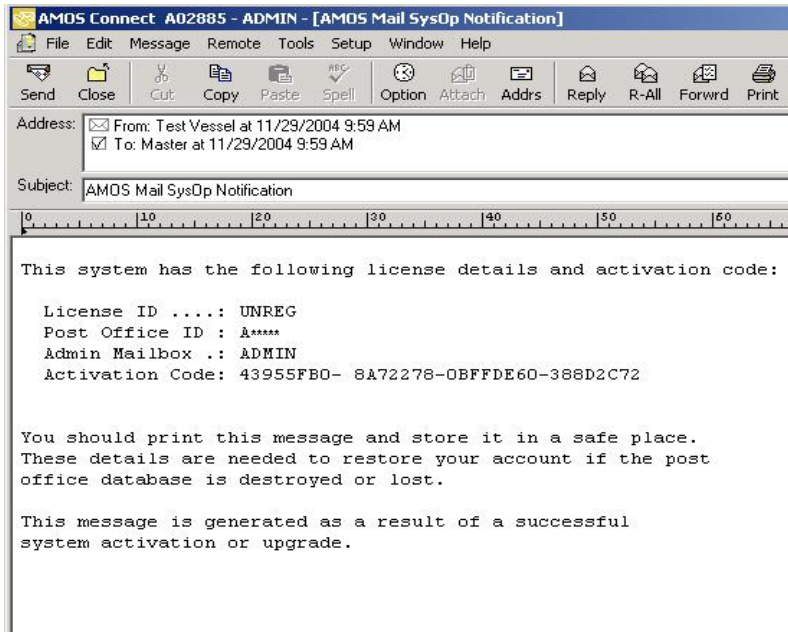


- 7) After these 5 minutes you should make another connection to the hub, after which you will receive an email with the text below.



Note: If you entered a “shore based email address” during registration, a copy of the email will also be sent to that email address.

- 8) Now restart your Nautilus One - AmosConnect software and verify a proper login. Check if there is an email in the inbox with subject “AMOS Mail SysOp Notification”. This email generated your license. Print this message and keep a copy of it in a safe place. You will need it if the software requires re-installation.

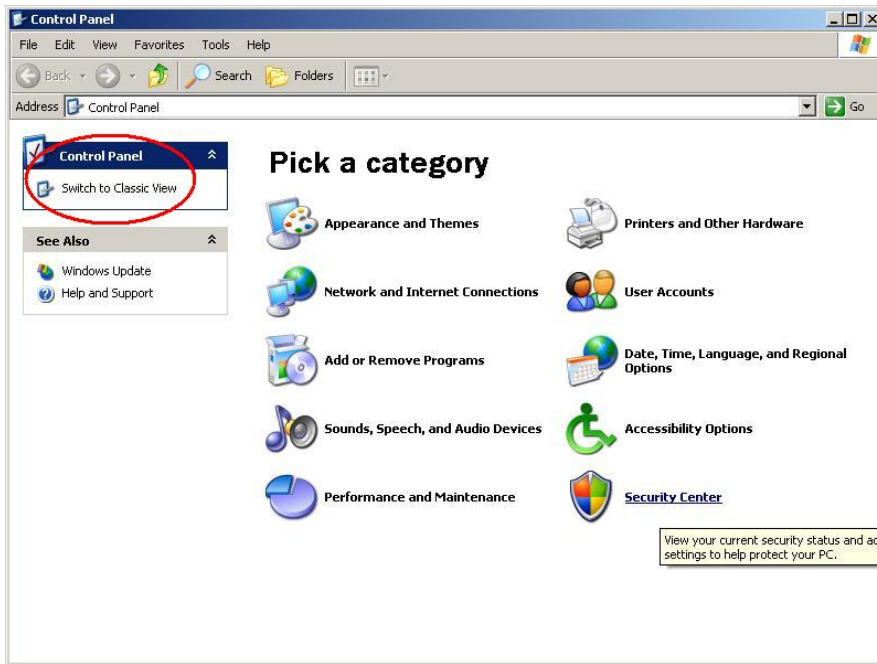


This means that your Nautilus One - AmosConnect installation & registration is complete!





If you will see the following screen, press **Switch to Classic View**



The screen will change to the screen similar like the one below, where you select Windows Firewall. Double click on the icon to open.

