



- 6) The “admin” mailbox needs to be configured. Press **Next** to fill in the details. In the “*Administrator’s Mailbox*” screen,
- a) If you want to add a password, complete the “Password” and “repeat password” boxes.
 - b) Enter the administrator’s Internet address, as supplied to you (please note that the Internet address is also shown on your original Nautilus One– Amos Connect application form). Press **Next**.

General

Mailbox ID: ADMIN

Mailbox Password: xxxxxx

Mailbox Name: Vessel Name

From Line:

Workgroup: Everyone

Internet Address: fill in your email address

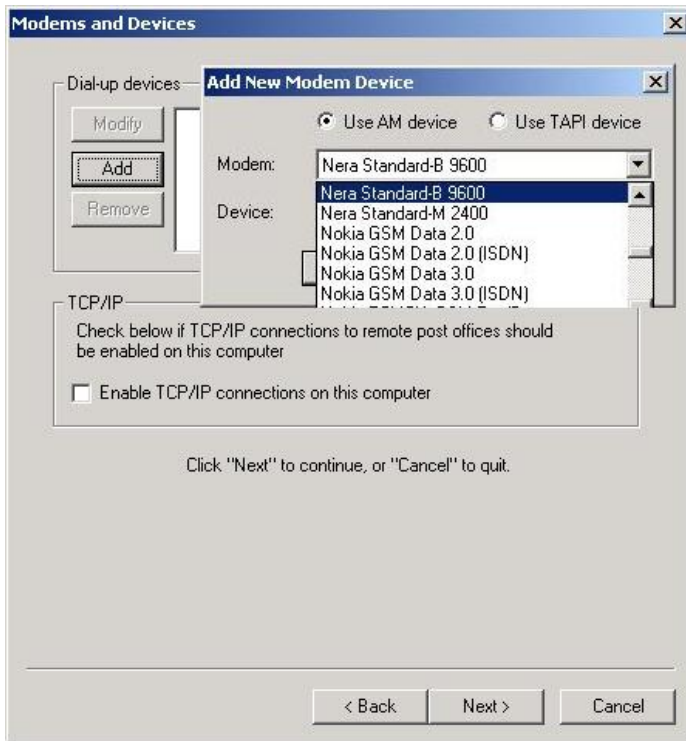
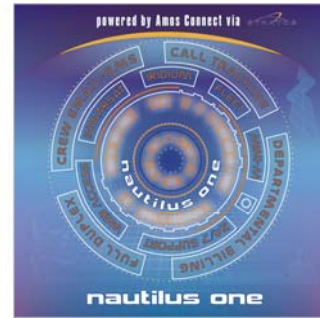
Default aging after: days

Max message size: KB

< Back Next > Cancel

- 7) Press **Next** to create the database. This may take a few seconds. Once the system has finished doing this press **Finish**.
- 8) Fill in your Gateway Password and press **Next**.

- 9) The screen “*Modems and devices*” allows you to select which modem(s)/terminal(s) you will use to connect to the Nautilus One–Amos Connect server. If you use BGAN, MPDS or any other TCP connection go to option B.
- Press **Add** and select your modem from the list. Try AM devices first and if your modem type is not listed, try TAPI. Note TAPI devices are installed through Windows Control Panel – if your modem or terminal does not appear in this list, first install it in Windows Control Panel and try again.
 - If you use BGAN, MPDS or any other TCP connection check the “Enable TCP/IP connections on this computer”-box and press **Next**.



The screen entitled “*Congratulations*” is the final step. Press **FINISH** and Nautilus One - AmosConnect is ready for use. To start Nautilus One– Amos Connect, press Start -> Programs -> Xantic-> Nautilus One – Amos Connect. You will then see the shortcut for Nautilus One.

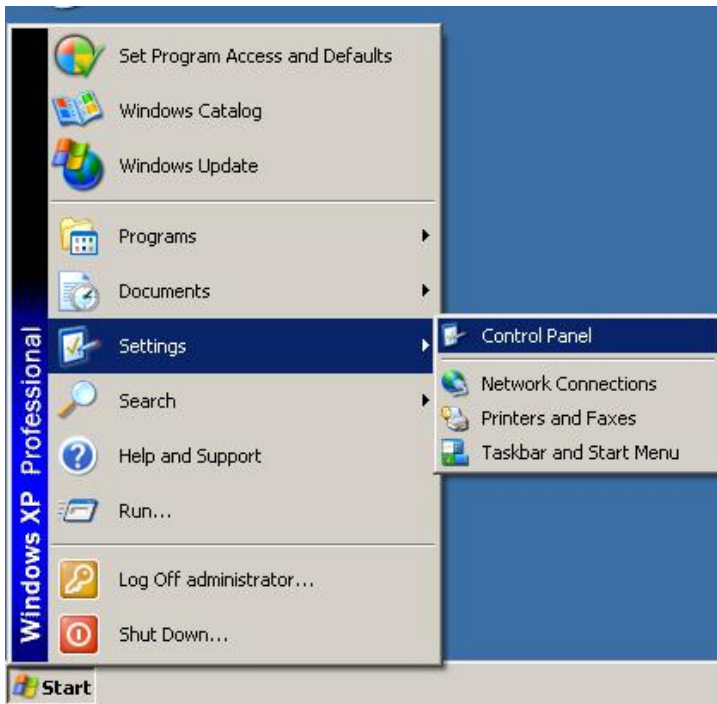
NOTE: for additional instructions on use of Windows XP SP2 together with TCP/IP connection method (BGAN, RBGAN and Fleet) please see annex A.

ANNEX A

If you are installing Nautilus One – Amos Connect on Windows XP SP2 with the Microsoft Firewall active (default) you must follow this additional procedure. After installing the Nautilus One Basic software the program starts up and the following messages appears:

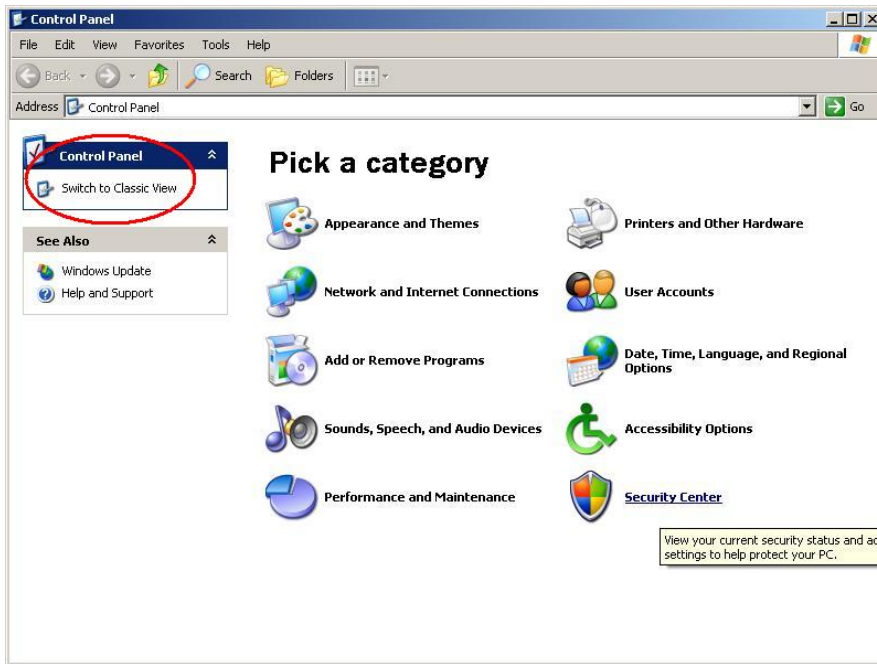


Here you should choose **Unblock**. If you choose one of the other options, it is possible that may you get an error message when trying to connect to the Nautilus One server. To solve this problem, you will need to go to the Control Panel in Windows.

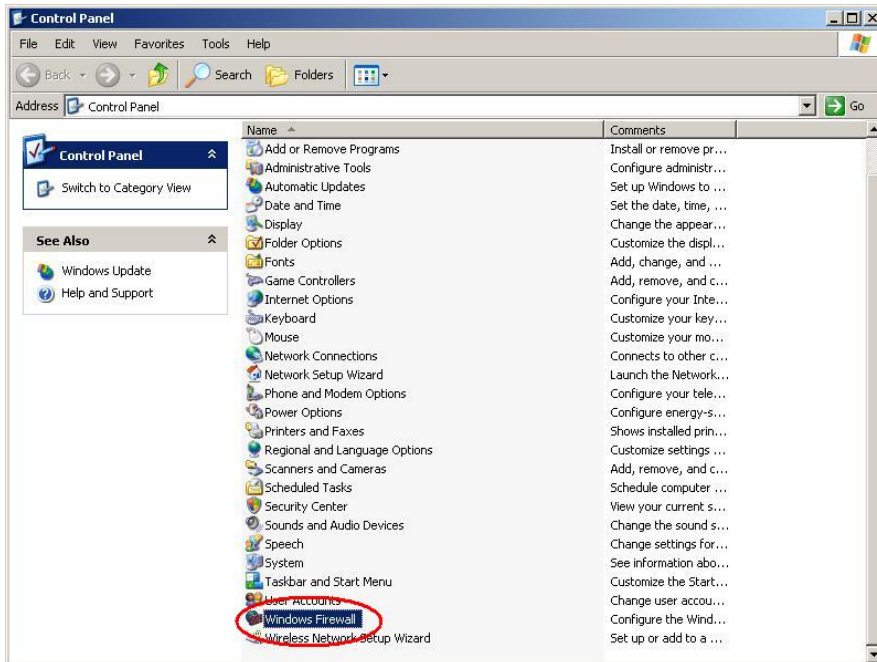




If you will see the following screen, press **Switch to Classic View**

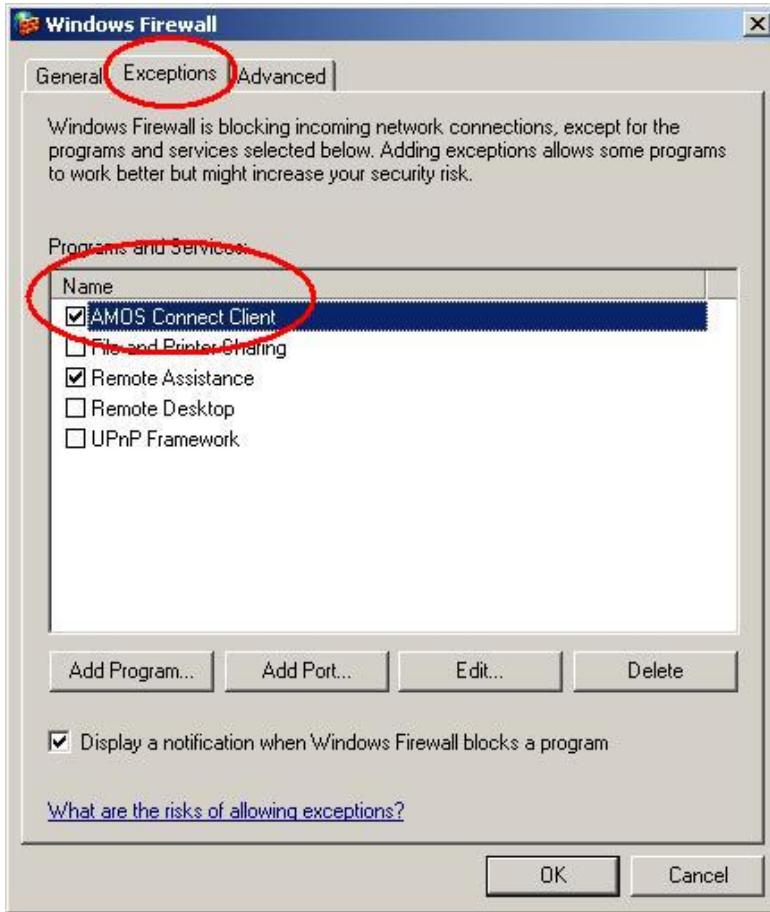


The screen will change to the screen below. Select Windows Firewall and double click on the icon.





In the Windows Firewall, press the tab “Exceptions”.



Here you need to **check** Nautilus One – Amos Connect Client. And after this press **OK**. You can now start using the Nautilus One software.

Assistance and Support

For more information, assistance and support, please visit our website: www.onenet.com.cy or contact your Sales Manager or Stratos's 24/7 Customer Service Team:

Customer Services;

One Net Limited	Stratos
Tel: +35725828999 Fax: +35725342213 E-mail: support@onenet.com.cy Online: www.onenet.com.cy	Tel: 1 888 766 1313 Toll free in N. America Tel: +1 709 748 4233 Worldwide Fax: 1 877 740 4300 Toll free in N. America Fax: +1 709 748 4300 Worldwide E-mail: info@stratosglobal.com Online: www.stratosglobal.com

